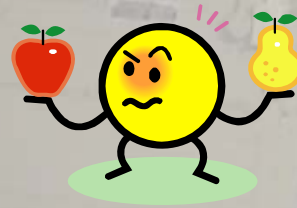




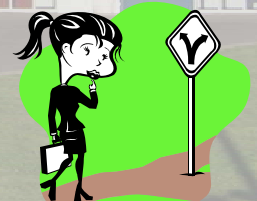
Hamilton Girls' High School



2012

Year 10

Option Booklet



Hamilton Girls' High School

Welcome to our option booklet for Year 10 2012

Introduction

We hope that you find this booklet helpful in planning for next year at Hamilton Girls' High School. It is expected that all students will be motivated to set realistic challenges and that they will work to fulfil the goals they set for themselves. Academic goals are an important part of school life. We also hope that a significant number of our students will become involved in activities and opportunities offered by the school as leaders or helpers, participants or supporters. This includes behaving in a mature, responsible manner and being caring and considerate towards others. These attributes, along with the ongoing development of skills such as self-discipline, working towards independence and taking responsibility as a learner, are ones that are increasingly needed as students progress through school. They will also assist students to have a smooth transition in their development into adulthood and will enable them to become lifelong learners. We expect and encourage students to make the most of the educational opportunities available to them across a broad spectrum of areas beyond the school environment.

How can this booklet help you in your long-term planning?

The aim of this booklet is to help students plan and select their programme of study for the next year and beyond.

It is an introductory guide only. Each student needs a programme of study that meets her needs and consultation and advice about the different subjects available should be sought. Parents and students should discuss subjects and courses with subject teachers, Heads of Departments, Deans, Tutor Group Teachers, the Careers Counsellor and Deputy Principals.

When making choices about subjects and courses, the following points should be kept in mind:

- Ability and interest in an area of learning;
- How a subject will help and where it will lead to;
- The desirability of a balanced education – it can be unwise to specialise too soon;

THE SUBJECTS OFFERED IN THIS OPTION BOOKLET ARE SUBJECT TO CHANGE. SOME SUBJECTS MAY NOT RUN IF THERE ARE INSUFFICIENT STUDENTS OR DIFFICULTIES WITH STAFFING. THE DECISION OF THE PRINCIPAL IS FINAL IN ALL MATTERS CONCERNING THE PLACEMENT OF STUDENTS AND THE SUBJECTS THAT ARE OFFERED.

What support is provided to help you select courses?

- Option evenings
- Talking to the Careers counsellor
- Careers pathfinder – www.careers.govt.nz
- Career Quest on computers in the Careers room
- Deans

Option Evenings

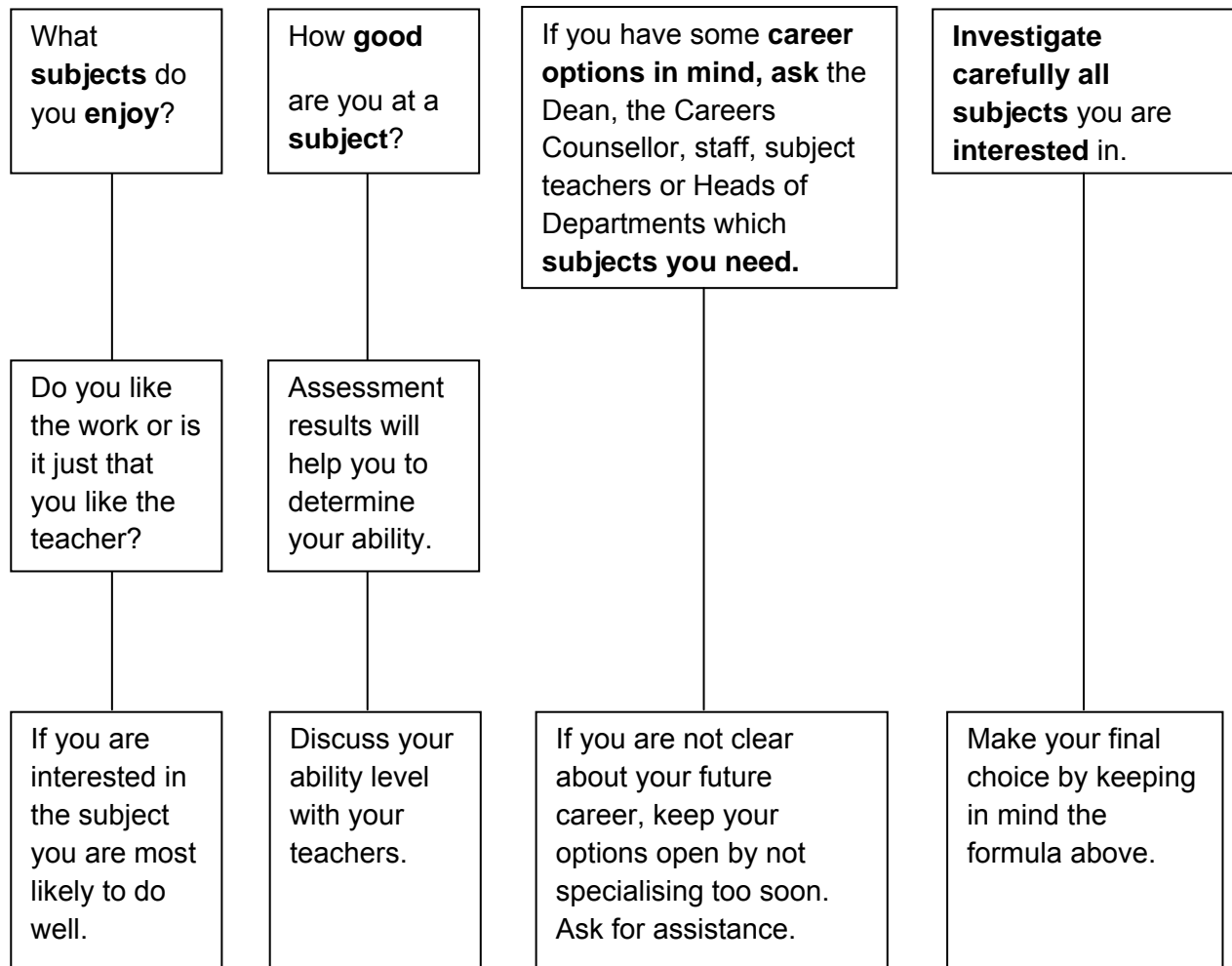
Tuesday 30 August Year 12 and 13 (in 2012)

Wednesday 31 August Year 10 and 11 (in 2012)

7.00 pm in the School Hall

SUBJECT CHOICE

INTEREST + ABILITY + OCCUPATION = SUBJECT CHOICE



Reminder: your choices are your future. Keep in mind the formula at the top of the page:

INTEREST + ABILITY + OCCUPATION = SUBJECT CHOICE

Do not take a subject just because your friends are taking it - or because you like the teacher!

Notes for Students Entering Year 10 in 2012

- 1 All students entering Year 10 study the following compulsory subjects:
English, Mathematics, Physical Education, Science and Social Studies.
- 2 All students select **3 option** subjects which they study throughout the year. Students are to select subjects that provide them with a **balanced** programme.

Please refer to the grid on the back of the Option form.
- 3 You may do either Economics **OR** Enterprise Studies.
- 4 Study the Subject Guide carefully so that you choose subjects to suit your present interests and future needs.
- 5 Two extension classes operate at Year 10 level. Students with special ability in English, Mathematics, Science and Social Studies are grouped together for their core subjects. Students in these classes are selected on their academic progress, by teacher nomination and on standardised test results. Students in our Year 10 extension classes are expected to study a language. (French, Japanese, Maori, Spanish).
- 6 Students do not read at the same speed or level and it is important that any problems students experience with reading are picked up in the early stages of their high school career. Reading assistance is available to all students, through the option system.
- 7 A Year 10 Learning Assistance Programme (Year 10 LAP) will be available to those who need additional support in core subject areas. This class is a follow on from Year 9 LAP.
- 8 English tuition for speakers of English as a second language (ESOL) is a programme that will replace one to three options for students who choose to take this option or who are directed into it.
- 9 Students who are fluent speakers of Te Reo Maori may study this subject at a more advanced level.
- 10 Peer tutoring is available for students with short-term learning problems. The Mathematics Department has lunch time tutoring. If you require help, talk with your Dean, Tutor Group Teacher or subject teacher.
- 11 Scientific calculators are required in Mathematics at Year 10.
- 12 There is 'open entry' to all subjects, unless otherwise stated.

YEAR 10 -13 COURSES

	Year 10	Level 1	Level 2	Level 3	Scholarship Available
ARTS	Art Practical	Art Practical	Art Painting	Art Painting	✓
			Art Photography	Art Photography	✓
			Art Design	Art Design	✓
			Art Printmaking		
Drama	Drama	Drama	Drama	✓	
Music	Music	Music	Music	✓	
ENGLISH	English	English	English or Te Reo Pakeha	English or Te Reo Pakeha	✓
		English with Applications	English with Applications	English with Applications	
		English with Extensions	English with Extensions	English with Extensions	✓
		International English	International English		
English for Speakers of Other Languages	English for Speakers of Other Languages	English for Speakers of Other Languages	English for Speakers of Other Languages		
HEALTH/PE	Health / Physical Education / Sport	Advanced PE – Sport	Advanced PE – Sport	Advanced PE – Sport	✓
		Advanced PE - Outdoors	Advanced PE - Outdoors	Advanced PE – Outdoors	✓
LANGUAGES	Te Reo Maori*	Te Reo Maori	Te Reo Maori	Te Reo Maori	✓
	French *	French	French	French	✓
	Japanese*	Japanese	Japanese	Japanese	✓
	Spanish*	Spanish	Spanish	Spanish	✓
MATHS	Mathematics	Maths with Extensions	Maths with Extensions	Calculus Statistics and Modelling	✓ ✓
		Mathematics	Mathematics	Statistics	
		Maths with Applications			
SCIENCE	Science*	Applied Science	Applied Science	Science	
		Science/ Extension Science	Biology Chemistry Physics	Science Biology Chemistry Physics	✓ ✓ ✓ ✓
SOCIAL SCIENCES	Economics Enterprise Studies Social Studies History	Accounting	Accounting	Accounting	✓
		Economics	Economics	Economics	✓
		Business Studies	Business Studies	Business Studies	
		Legal Studies			
		Media Studies	Media Studies	Media Studies	✓
		Geography	Geography	Geography	✓
		History	History	History	✓
		Classical Studies	Classical Studies	Classical Studies	✓
		Social Studies	Social Studies	Social Studies	
		Civics			
TECHNOLOGY	Technology: Biotechnology Food Graphics Product Design Soft Materials Digital Technology	Tourism	Tourism	Tourism	
		Hospitality	Hospitality	Hospitality	
		Applied Technology: Food/ Textiles			
		Applied Technology: Practical Design			
		Technology: Biotechnology			
		Technology: Food	Technology: Food	Technology: Food	
		Technology: Graphics	Technology: Graphics	Technology: Graphics	✓
		Technology: Soft Materials	Technology: Soft Materials	Technology: Soft Materials	
		Digital Technology	Digital Technology	Digital Technology	
Computer Studies	Computer Studies	Computer Studies			
		Early Childhood Education	Early Childhood Education		
MSC	Certificate in Mainstream Studies runs across all Senior Year levels.				

Subject: Art ARO	
Entry Requirement:	Open entry.
Course Outline:	The year 10 course extends into a visual art programme covering a variety of areas. Assignments cover drawing, painting, three-dimensional work, design and printmaking.
Where does this lead?	The course provides students with the background experience and opportunity to continue with Art into Level 1.
Days out of school: Cost:	Class visits to exhibitions where possible and applicable. \$40 material and paper, plus stationery costs for A4 Visual Diary, A3 envelope, pencils and brushes.

Subject: Digital Technology DGT	
Entry Requirement:	Open entry.
Course Outline:	The focus of this course is on the use of various types of data and information such as text, images, audio, video and numbers, for the purpose of conveying a message and the technologies to enable this to happen. Students will look at four different areas of digital technology: digital information such as the presentation and management of data including file management, word processing, spreadsheets; digital media such as video production, animation and design; programming and computer science such as writing a simple program using drag and drop tools to create a simple game; and digital infrastructure such as understanding the parts of the computer. Students will learn the basic skills of keyboarding, researching, email etiquette and gain an understanding of cybersafety.
Where does this lead?	This course is a prerequisite for Level 1 Digital Technology.
Days out of school: Cost:	None \$10 for printing.

Subject: Drama DRM	
Entry Requirement:	Open entry to this course.
Course Outline:	<p>The aim of this course is for students to develop confidence and skills for life while nurturing a love and knowledge of theatre. Students develop the skills of mime, movement, improvisation, characterisation, working with texts and voice production. Students must be prepared to perform for an audience at the end of each unit of work and to take part in a full evening performance at the end of the year. Two thirds of the course is practical and one third written.</p> <p>Since this course prepares students for NCEA Level 1 it has an academic component. All students must perform regularly and complete written work.</p>
Where does this lead?	NCEA Drama Level 1.
Days out of school: Cost:	\$5.

Subject: Economics ECO	
Entry Requirement:	Open entry.
Course Outline:	<p>Students look at the many ways that ordinary people are involved in monetary and business activities in their day-to-day lives. Topics such as earning incomes, money and budgeting systems, economic and legal concepts of demand, consumer's rights and responsibilities are designed to give students the skills to make informed choices in adult life. An introduction to Accounting is also included in this course. You will learn how to control business and the NZ economy. Essential skills for future leaders. Students are given the opportunity to put in practice economic concepts learned in class, when they set up and run a small business. You will learn through field trips, producing movies, making power point presentations, looking at real world case studies, computer simulations, and a wide range of fun and interesting activities.</p> <p>Note: Students may not choose both Economics and Enterprise Studies.</p>
Where does this lead?	NCEA Level One Economics and Accounting, Level Two Legal Studies and Business Studies.
Days out of school: Cost:	<p>1 Day Field Trip</p> <p>\$5 class materials fee. Students may contribute up to \$5 to set up their own small business in order to sell the goods they make. However, they should get this back with a tidy monetary profit, which they can then spend on whatever they like.</p>

Subject: Enterprise Studies		EPS
Entry Requirement:	Open entry.	
Course Outline:	<p>This is a course that introduces students to the business world. Students study local businesses and explore the key elements of successful enterprises. Students organise and run their own business for a number of weeks. This is a very practical course suited to students who enjoy a challenge and like to discover things for themselves. It covers basic business concepts through student experiences.</p> <p>You will learn through setting up your own business, field trips, producing movies, making power point presentations, looking at real world case studies, computer simulations, and a wide range of fun and interesting activities.</p> <p>Note: Students may not choose both Economics and Enterprise Studies.</p>	
Where does this lead?	NCEA Level One Economics and Accounting, Level Two Legal Studies and Business Studies.	
Days out of school: Cost:	<p>1 Day Field Trip.</p> <p>\$5 class materials fee. Students may contribute up to \$5 to set up their own small business in order to sell the goods they make. However, they should get this back with a tidy monetary profit, which they can then spend on whatever they like.</p>	

Subject: English for Speakers of Other Languages		ESL
Entry Requirement:	Students who do not use English as their first language and want English language and mainstream support and/or are recommended by teachers.	
Course Outline:	Success in mainstream subjects is difficult without good English language skills. This course will support students by improving their language skills and by providing support for mainstream subjects. Students will develop confidence and increasing expertise in English.	
Where does this lead?		
Days out of school: Cost:		

Subject: French FRE	
Entry Requirement:	Good grades in Year 9 French.
Course Outline:	<p>This course focuses on communication through the development of reading, listening, writing and speaking skills. Students learn about French language and culture through the use of text, media and song. They can understand and construct simple texts and can describe aspects of their own background and immediate environment.</p> <p>Topics include: time, weather, seasons; people - their appearance and personality; leisure time activities; getting around town; shopping for food; roles and duties at home and at school.</p> <p>Students intending to go on a French trip in Y13 need to continue to learn French in Years 11 and 12.</p>
Where does this lead?	NCEA Level 1.
Days out of school: Cost:	<p>None</p> <p>Print Resources \$10 Workbook \$10 Rich Task \$10.</p>

Subject: History HIS	
Entry Requirement:	Open entry.
Course Outline:	<p>Students study three main areas of history – Ancient Societies (Egypt, Greece and Rome), Europe in the Middle Ages and the Modern World. Students will see how revolutions, revolts and wars have influenced different societies. A number of case studies will be made, including Nazi Germany and Native Americans. The aim is for students to learn about the past in order to be better able to understand the present.</p>
Where does this lead?	Level 1 History.
Days out of school: Cost:	<p>None.</p> <p>None.</p>

Subject: Japanese JPN	
Entry Requirement:	Good grades in Year 9 Japanese.
Course Outline:	<p>Basic listening and speaking skills are further developed and the reading and writing of romaji and Hiragana is revised. Katakana is introduced. Use is made of computers, videos, magazines and songs. Our aim is to give students the chance to experience the pleasure of using Japanese and to develop the skills necessary for NCEA Level 1 in Year 11. Visits of Japanese people to the classroom are encouraged so that students may converse with native speakers of Japanese.</p> <p>Topics covered are school, daily routine, family and free time.</p> <p>Students intending to go on the Japan trip in Year 13 need to continue to learn Japanese in Years 11 and 12.</p>
Where does this lead?	NCEA Level 1.
Days out of school: Cost:	<p>None</p> <p>Katakana Workbook \$10 Print resources \$10 Rich Task \$20.</p>

Subject: Maori MAO	
Entry Requirement:	This course is open to any student who has a commitment to learning te reo Māori in Year 10.
Course Outline:	<p>This course emphasises the development of learning te reo Māori. The development of writing, listening, reading and oral skills.</p> <p>HGHS Languages Faculty provides a computer programme called "Language Perfect" which allows individuals to work at their own particular level.</p> <p>Our aim is to prepare the students for NCEA Level 1 in Year 11.</p>
Where does this lead?	Level 1 Maori.
Days out of school: Cost:	<p>\$20.</p>

Subject:	Music	MUS
Entry Requirement:	Open entry, though ability to play an instrument (voice is treated as an instrument) an advantage, though lessons given for beginners.	
Course Outline:	A varied Music course for students. A range of skills are assessed including Performance, Composition, History, Aural and Score Reading.	
Where does this lead?	Level 1 Music.	
Days out of school: Cost:	Various, ranging from festivals to competitions. \$10.	

Subject:	Spanish	SPN
Entry Requirement:	Good grades in Year 9.	
Course Outline:	<p>This course emphasizes the development of four skills: listening, speaking, reading and writing. Students learn about life and culture of Spain and Latin American countries through songs, magazines, games. The topics covered in the course are: family, school, house and town, free time.</p> <p>Our aim is to give students the chance to experience the pleasure of using Spanish language, and to prepare for NCEA Level 1 in Year 11.</p> <p>Students intending to go on a Spanish trip in Year 12/13 need to continue to learn Spanish in Year 11.</p>	
Where does this lead?	NCEA Level 1.	
Days out of school: Cost:	None Print resources \$12 Listos workbook if you did not do Spanish in Y9 \$10 Food Activities (optional).	

Subject:	Sport	SPT
Entry Requirement:	Recommendation from Year 9 PE teacher, Head of Department or Sports Coach.	
Course Outline:	<p>The students will be involved in a wide range of physical activities. The activities will have a sport specific focus. Students will explore how physical activity relates to their total well being. There will also be a basic introduction to anatomy, biomechanics, exercise physiology, goal setting, time management, fitness and sports psychology and nutrition. The students selected in this subject may also have the opportunity to be part of the Hamilton Girls' High Academy.</p> <p>Students will take part in a triathlon, which requires them to swim 400m competently.</p>	
Where does this lead?	Level 1, 2 and 3 Sport Option.	
Days out of school: Cost:	Two. \$55.	

Subject:	Technology: Biotechnology	TEB
Entry Requirement:	Open entry.	
Course Outline:	<p>This course is a step up from Year 9 Technology. Biotechnology can be used to add value to food products, horticulture and forestry, to address environmental issues and to improve human health. The course may use a range of materials or concepts to respond to a technological problem. Students will apply their knowledge of the technology process to investigate an issue and develop an outcome which meets the requirements of an identified stakeholder or client. The research into their issue may include working in consultation with other learning areas of the school. Practical skills, product trials and the manufacture of the final concept form a major component of this course. Students will also be required to present a portfolio documenting their process and providing evidence of their learning.</p> <p>Refer to www.biotechlearn.org.nz for examples of projects.</p>	
Where does this lead?	Pre-requisite for Level 1 Technology.	
Days out of school: Cost:	\$40. Students will be required to buy some of their specialist resources.	

Subject: Technology: Food Technology		TEF
Entry Requirement:	Open entry.	
Course Outline:	<p>This course is a step up from Year 9 Technology. It focuses on the development of food related products, which address a technological problem. The course may use other materials or concepts from alternative technologies in an innovative way. Students will apply their knowledge of the technology process to investigate an issue and develop an outcome which meets the requirements of an identified stakeholder or client. The research into their issue may include working in consultation with other learning areas of the school. Practical skills, product trials and the manufacture of the final concept form a major component of this course. Students will be required to present a portfolio documenting their process and providing evidence of their learning.</p> <p>Refer to www.techlink.org.nz/student-showcase for examples of projects.</p>	
Where does this lead?	Pre-requisite for Level 1 Technology.	
Days out of school: Cost:	\$40. Students will be required to buy some of their specialist resources.	

Subject: Technology: Graphics		TEG
Entry Requirement:	Open entry.	
Course Outline:	<p>This course is a step up from Year 9 Technology. This course will focus on graphic communication and design; environmental, architectural, technological and media design to respond to a technological problem. Students will apply their knowledge of the technology process to investigate an issue and develop an outcome which meets the requirements of an identified stakeholder or client. The research into their issue may include working in consultation with other learning areas of the school. Practical skills, product trials and the manufacture of the final concept form a major component of this course. Students will also be required to present a portfolio documenting their process and providing evidence of their learning.</p>	
Where does this lead?	Pre-requisite for Level 1 Technology.	
Days out of school: Cost:	\$40 plus a Graphics pack. Students will be required to buy some of their specialist resources.	

Subject:	Technology: Product Design	TEP
Entry Requirement:	Open entry.	
Course Outline:	<p>This course provides a progression from Year 9 Product Design but with a year long focus on the development of products across a range of possibilities. The course will further your understanding of Product Design and aesthetics, Technology, and construction and engineering processes. It may focus on the development of electronics, decorative art forms, interior and exterior product design and Landscape design and construction. The course will use a range of materials and practical skills. Product trials and the manufacture of the final concept form a major component of this course. Students will also be required to present a portfolio documenting their response to the brief and to provide evidence of their learning. Both the practical product and portfolio contribute to assessment, neither stands alone. Refer to www.techlink.org.nz/student-showcase for examples of projects.</p>	
Where does this lead?	Pre-requisite for Level 1 Technology.	
Days out of school: Cost:	<p>Up to two days may be required.</p> <p>\$40. Students will be required to buy some of their specialist resources.</p>	

Subject:	Technology: Soft Materials	TES
Entry Requirement:	Open entry.	
Course Outline:	<p>This course is a step up from Year 9 Technology. It focuses on the development of soft materials products, which address a technological problem. The course may use other materials or concepts from alternative Technologies in an innovative way.</p> <p>Students will apply their knowledge of the technology process to investigate an issue and develop an outcome which meets the requirements of an identified stakeholder or client. The research into their issue may include working in consultation with other learning areas of the school.</p> <p>Practical skills, product trials and the manufacture of the final concept form a major component of this course. Students will be required to present a portfolio documenting their process and providing evidence of their learning.</p> <p>Refer to www.techlink.org.nz/student-showcase for examples of projects.</p>	
Where does this lead?	Pre-requisite for Level 1 Technology.	
Days out of school: Cost:	<p>\$40.</p> <p>Students may be required to buy their own specialised patterns or fabrics as many projects are for individual use.</p>	

CRITICAL DATES FOR OPTION SELECTION 2012

Tuesday	30 August	7.00pm	Year 12/13 (2012)	Option Evening
Wednesday	31 August	7.00pm	Year 10/11 (2012)	Option Evening

Friday 9 September Option forms returned to Tutor Group Teacher

COURSE INFORMATION 2012

Wednesday	25 January	9.00am-12.00pm	Year 12
Wednesday	25 January	1.00pm-4.00pm	Year 13